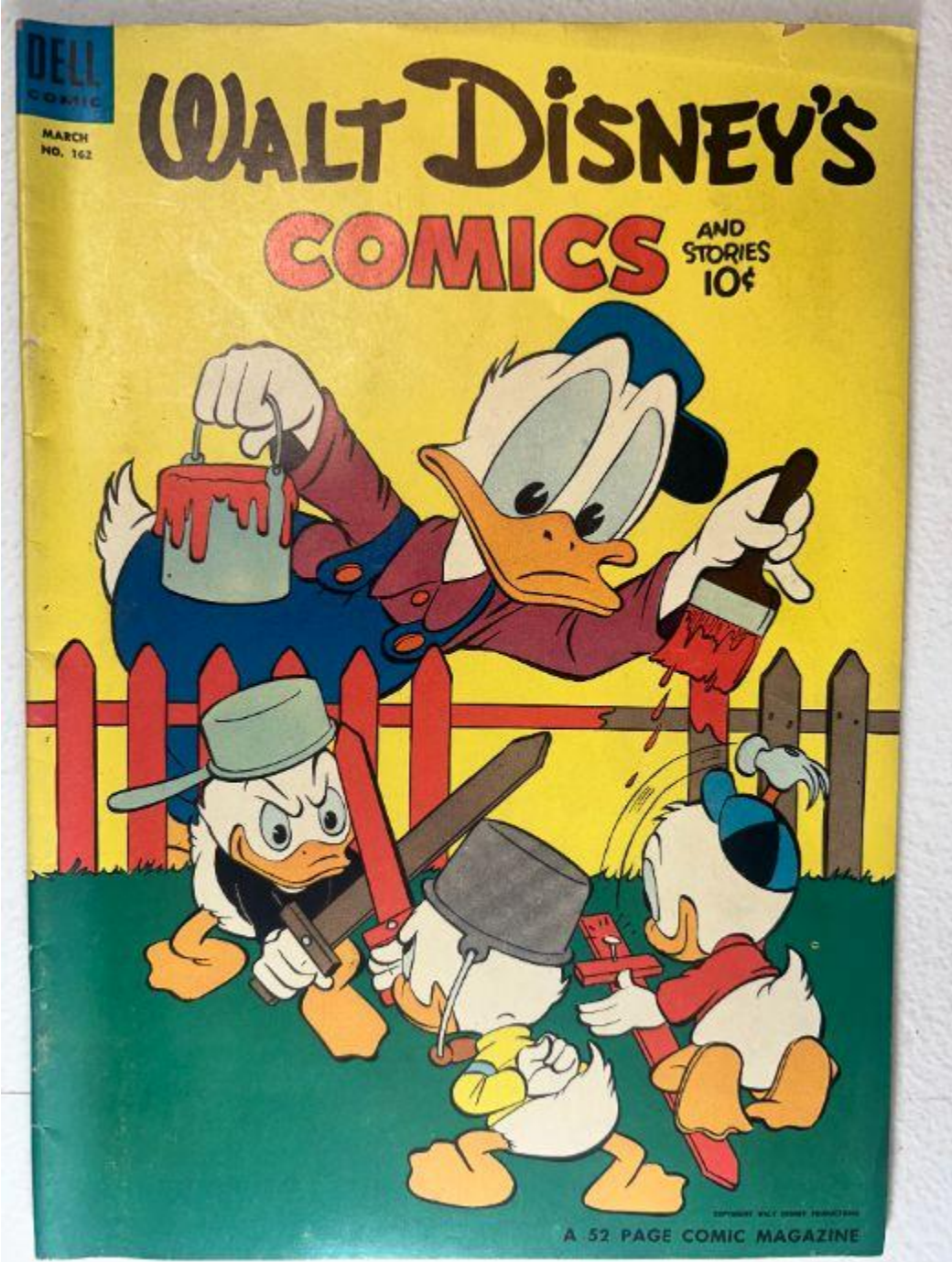


■ Walt Disney's Comics and Stories – Vol. 14 No. 6
(March 1952)

Evaluation Date: April 3, 2026



SUMMARY OF OBSERVATIONS

This comic retains the front cover, back cover, centerfold, and all photographed interior pages. Overall presentation is very strong, with the front cover showing vivid color saturation and retained surface gloss, and the interior pages displaying clear artwork with consistent age-related toning. The spine remains continuous and intact, with a slight roll visible.

Condition issues are limited and localized. The front cover shows a **small edge tear at the top-right edge** and light handling wear along the spine. The spine exhibits **fine vertical cracking** and a **slight roll**, without splitting. Both staples are present and embedded, showing **surface oxidation** without visible rust migration into surrounding paper. Interior pages appear clean and complete, with uniform toning consistent with age. The brittleness test image shows a single page gently flexed, forming a smooth arc with no visible fiber fracture.

FRONT COVER — OBSERVATIONS

Walt Disney's Comics and Stories – Vol. 14 No. 6 (March 1952)

Photo Condition & Quality:

Image is sharp and evenly lit, showing the full cover with edges, corners, and spine visible. Resolution is sufficient to evaluate gloss, edge integrity, and spine condition.

Observations:

- Strong, even color saturation across the yellow and green cover fields.
- Surface gloss is clearly visible across most of the cover.
- At the **top-right edge**, a **small edge tear** is visible, extending approximately **3–5 mm inward** from the edge, with separated paper fibers at the tip.
- Along the spine edge, **fine vertical cracks** are present, approximately **2–4 mm** in length.
- Light abrasion and handling wear are visible along the spine, without paper loss.
- Corners show light rounding, approximately **2–4 mm** inward.
- No writing observed.

Overall Impression:

The front cover remains visually strong, with a **small edge tear and light spine wear**.

BACK COVER — OBSERVATIONS

Walt Disney's Comics and Stories – Vol. 14 No. 6 (March 1952)

Photo Condition & Quality:

Image is clear and evenly lit, fully framed with edges and corners visible.

"SPARK UP!"
to get a clear shot"
SAYS **BOB DAVIES**
SHOOTING STAR OF THE ROCHESTER ROYALS ...

HERE'S ONE WAY TO DODGE YOUR GUARD, TOMMY. STOP SUDDENLY WHEN TAKING A PASS ...

THEN MAKE A QUICK TURN ...

YOUR GUARD'S CAUGHT OFF-BALANCE, AND IT'S AN EASY LAY-UP BUT YOU GOTTA HAVE THAT "SPARK"

YOU CAN'T SPARK UNLESS YOU'RE IN SHAPE! GET PROPER REST AND FOOD. NOTICE --- I CHOOSE ENERGY FOODS LIKE WHEATIES ---

I'VE HEARD THAT ABOUT WHEATIES ---

THEY TASTE GOOD TOO!

THAT'S THE OLD SPARK, TOMMY!

SPARK UP WITH WHEATIES!
"Breakfast of Champions"

WHEATIES
Breakfast of Champions

THERE'S A WHOLE KERNEL OF WHEAT IN EVERY WHEATIES FLAKE

- ★ WHOLE WHEAT FOR GROWTH
- ★ WHOLE WHEAT FOR STAMINA
- ★ WHOLE WHEAT FOR STRONG MUSCLES

Get this photo cut. Look for different champion pictures in other Dell Comics.

Observations:

- Back cover exhibits **uniform tan toning** across the surface.
- Paper surface appears flat, with no cockling or rippling visible.
- No isolated dark patches, tide lines, or boundary-defined stains observed.
- Light edge wear along the bottom and spine edges, approximately **4–8 mm intermittently**.
- Corners show light rounding, approximately **3–5 mm** inward.
- No writing observed.

Overall Impression:

The back cover remains intact with **light handling wear and uniform age-related toning**.

INTERIOR PAGES — OBSERVATIONS

Walt Disney's Comics and Stories – Vol. 14 No. 6 (March 1952)

Photo Condition & Quality:

Images are sharp and evenly lit, showing full interior pages with margins visible.





Observations:

- Interior pages exhibit **tan to light-tan paper coloration**.
- Page color is consistent across the photographed pages, with slightly deeper toning toward outer margins.
- The transitions in tone are gradual and even, consistent with **normal age-related oxidation**.
- Artwork remains clear with strong color and intact panel borders.
- No interior tears, chips, or paper loss observed.
- Minor corner bends visible on some pages, approximately **2–4 mm** inward.
- No interior writing observed.
- **Indicia confirmation:** *Walt Disney's Comics and Stories, Vol. 14, No. 6, March 1952.*

Overall Impression:

Interior pages are **clean, complete, and evenly toned**, with minor handling wear only.

CENTERFOLD — OBSERVATIONS

Walt Disney's Comics and Stories – Vol. 14 No. 6 (March 1952)

Photo Condition & Quality:

Image is in focus and evenly lit, clearly showing both pages and the central gutter.



Observations:

- Both staple positions visible.
- Surrounding paper shows light compression at the fold only.
- No tearing, separation, or paper loss visible.
- Centerfold remains fully attached.

Overall Impression:

The centerfold is **securely attached and structurally sound**.

SPINE — OBSERVATIONS

Walt Disney's Comics and Stories – Vol. 14 No. 6 (March 1952)

Photo Condition & Quality:

Image is sharp and well lit, showing the full spine length.



Observations:

- Spine remains continuous and intact.
- A **slight spine roll** is visible along the upper portion of the spine.
- Fine vertical cracking present, approximately **2–4 mm** per crack.
- No spine splits or exposed interior page layers observed.

Overall Impression:

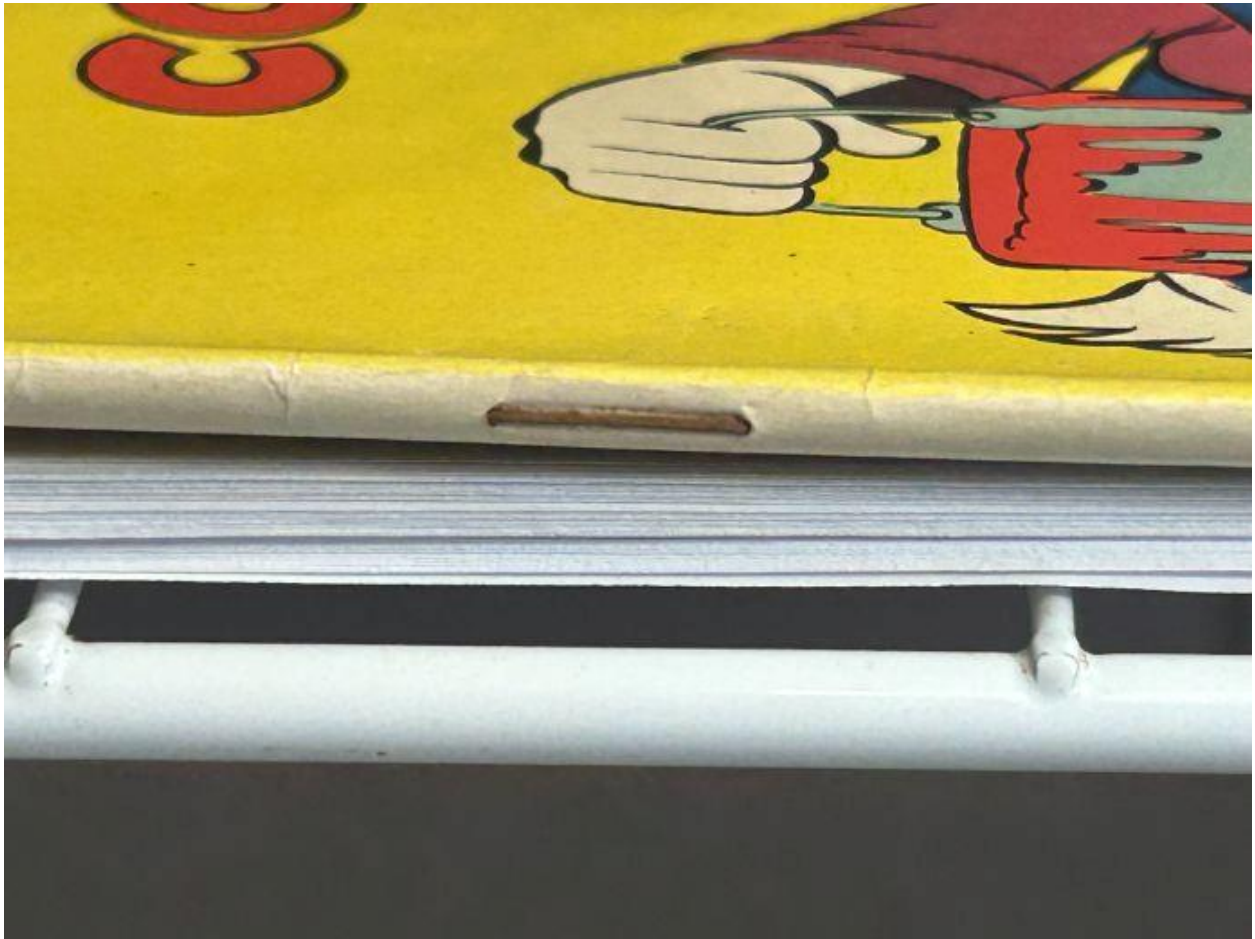
The spine is **structurally intact with minor roll and light cracking**.

UPPER STAPLE — OBSERVATIONS

Walt Disney's Comics and Stories – Vol. 14 No. 6 (March 1952)

Photo Condition & Quality:

Macro image is sharp and evenly lit.



Observations:

- Metal staple present and embedded.
- **Surface-level oxidation** visible as darkened metal coloration.
- No visible rust migration into surrounding paper.
- Surrounding paper remains intact.

Overall Impression:

Upper staple shows **surface-level oxidation only**.

LOWER STAPLE — OBSERVATIONS

Walt Disney's Comics and Stories – Vol. 14 No. 6 (March 1952)

Photo Condition & Quality:

Macro image is clear and properly framed.



Observations:

- Metal staple present and embedded.
- Oxidation comparable to the upper staple.
- Surrounding paper remains intact with no visible deterioration.

Overall Impression:

Lower staple shows **surface-level oxidation only**.

BRITTLINESS TEST — OBSERVATIONS

Walt Disney's Comics and Stories – Vol. 14 No. 6 (March 1952)

Photo Condition & Quality:

Image shows a single interior page lifted above flat underlying pages.



Observations (confined to the lifted page):

- Page bends in a **smooth, shallow arc**.
- No visible fiber fracture, splitting, or flaking along the bend line.
- Paper surface remains continuous at the point of flex.

Overall Impression:

The tested page demonstrates **retained flexibility** and does **not exhibit brittle behavior**.